

Real Estate Services

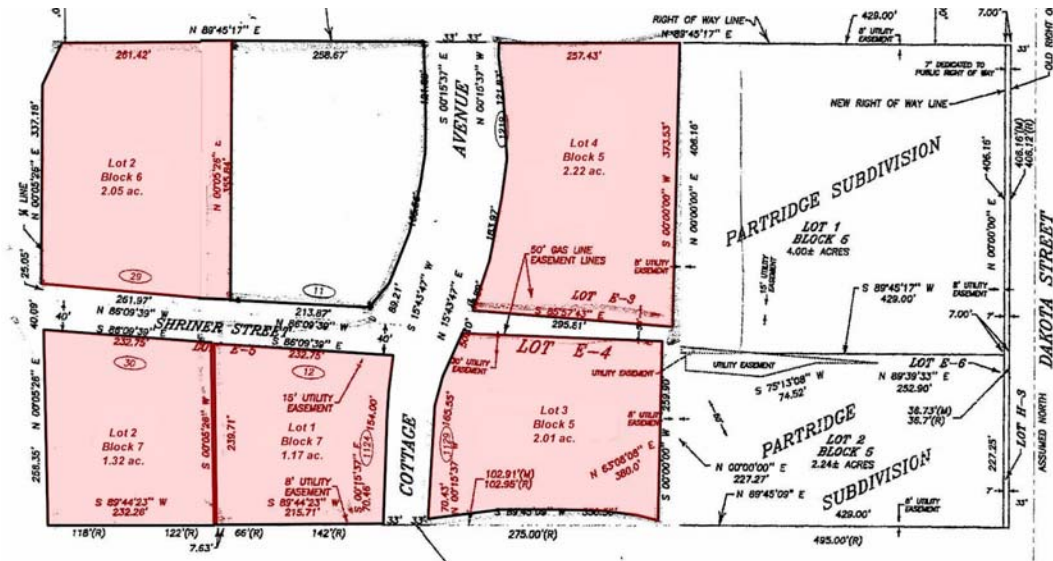
Bender
COMMERCIAL

We open doors.

For Sale

Shriner Crossing
Cottage Avenue and Shriner Street
Vermillion, South Dakota

COMMERCIAL LOTS

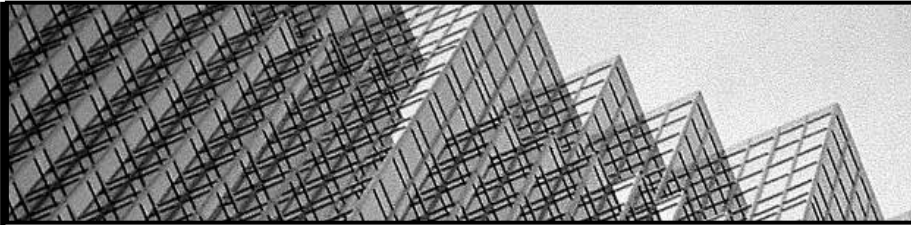


| Lot | Size | Price |
|----------------|------------|-------------------------------|
| Lot 4, Block 5 | 2.22 acres | \$2.25/sq. ft. (\$217,582.00) |
| Lot 3, Block 5 | 2.01 acres | \$2.00/sq. ft. (\$175,112.00) |
| Lot 2, Block 6 | 2.05 acres | \$2.00/sq. ft. (\$178,596.00) |
| Lot 1, Block 7 | 1.17 acres | \$1.75/sq. ft. (\$89,190.00) |
| Lot 2, Block 7 | 1.32 acres | \$1.75/sq. ft. (\$100,624.00) |

- Zoned General Business District
- Great value for commercial lots in Northern Vermillion
- Neighbors include Prairie Eye Clinic, Holiday Inn Express, Walmart.
- Utilities, curb and gutter all ready for development
- Lots may be subdivided.

For More Information:

Nick Gustafson – (605) 782-1668
Douglas G. Brockhouse, CCIM, SIOR (605) 782-1664
 122 South Phillips Avenue, Suite 350
 Sioux Falls, South Dakota 57104
 E-mail: nick@benderco.com or dbrock@benderco.com



Real Estate Services

Bender

COMMERCIAL

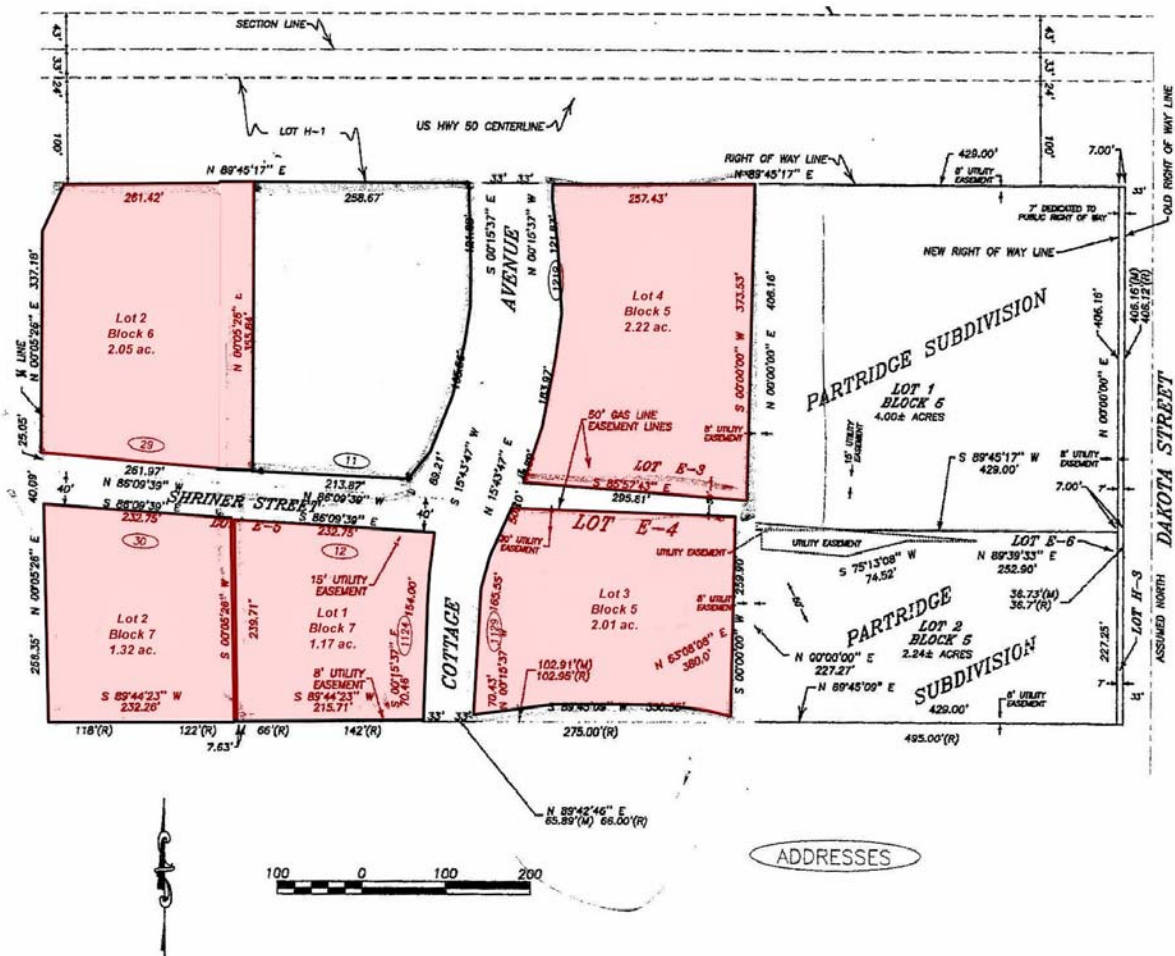
We open doors.

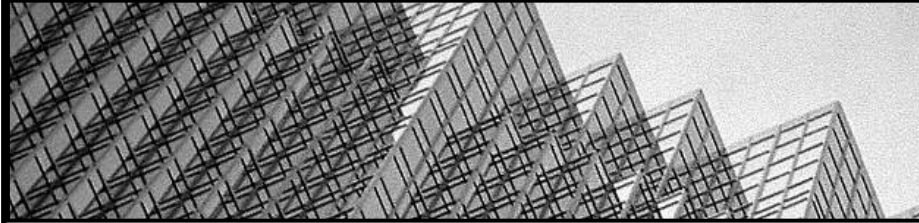
For Sale

Shriner Crossing

Cottage Avenue and Shriner Street
Vermillion, South Dakota

COMMERCIAL LOTS





Real Estate Services

Bender
COMMERCIAL

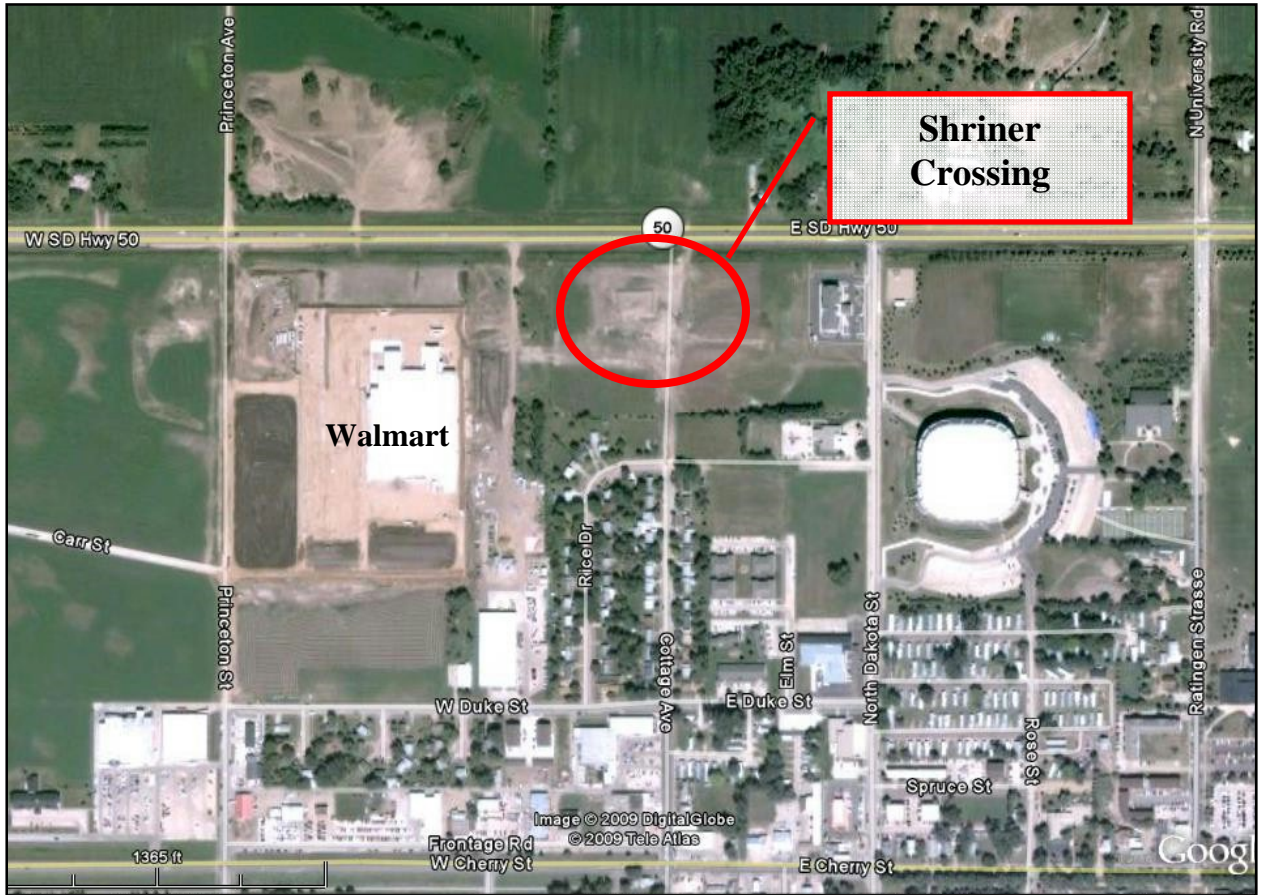
We open doors.

For Sale

Shriner Crossing

Cottage Avenue and Shriner Street
Vermillion, South Dakota

COMMERCIAL LOTS



L-1101
© 2009 Bender Companies

*Per Owner and/or County Assessors Office. Buyer should verify independently.
Information herein deemed reliable, but not guaranteed.

